



CoreLine Waterproof – the clear choice for LED

CoreLine Waterproof

Whether for a new building or renovation of an existing space, customers want lighting solutions that provide quality of light and substantial energy and maintenance savings. The new CoreLine Waterproof range of LED products can be used to replace traditional waterproof luminaires with fluorescent lamps. The process of selecting, installing and maintaining is so easy – it's a simple switch.

Benefits

- Up to 50% energy savings compared with TL-D
- Reliable LED technology – maintenance-free
- Direct replacement for conventional waterproof luminaires in terms of light performance, installation flexibility and length

Features

- Reliable integrated LED technology, ensuring maintenance-free installation and a long lifetime
- Can be used to replace traditional waterproof luminaires ranging from 18 to 58 W TL-D
- Wide-beam light distribution
- Diffuser with optical element ensures visual comfort
- Ceiling-mounted bracket and suspension hooks included; installation can be made vandal-proof by additional screw fixation of mounting brackets

Application

- Parking garages
- Warehouses
- General lighting

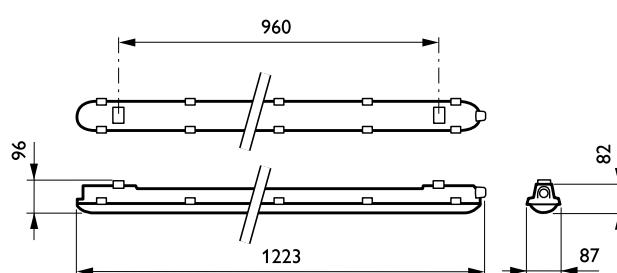
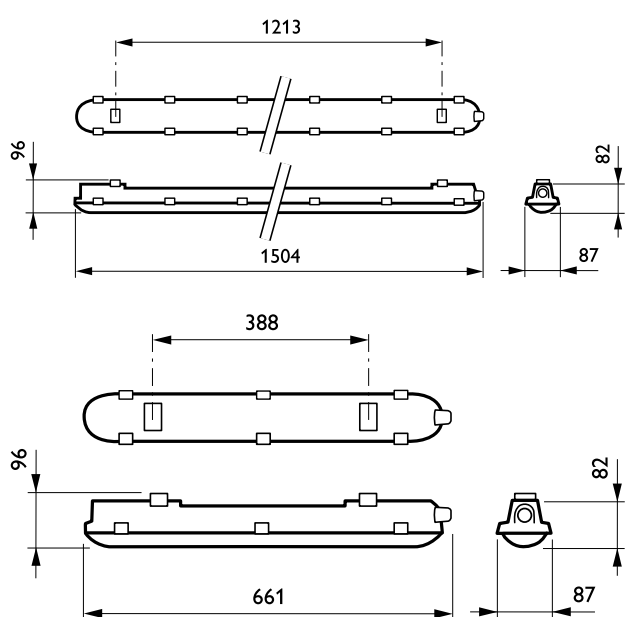
PHILIPS

Related products



CoreLine Waterproof WT120C
luminaire

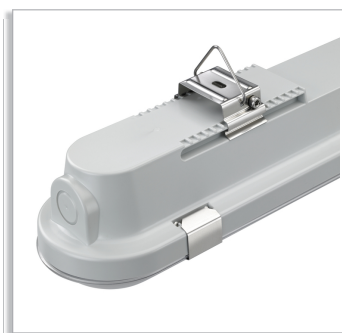
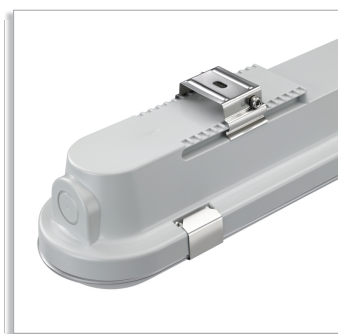
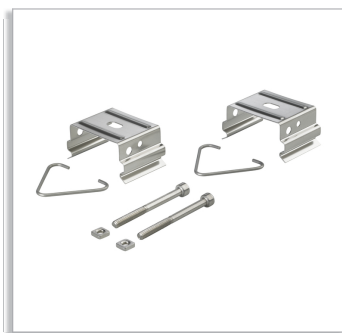
Dimensional drawing



Product details



Product details



Product details



General Information (1/2)

order code	CE mark	Protection class IEC	Optical cover/lens type	Driver included	Emergency lighting	ENEC mark	Flammability mark	Glow-wire test	Lamp family code	Light source replaceable
910500453335	CE mark	Safety class I (I)	PC	Yes	No	ENEC mark	F	850/30	LED18S	No
910500453336	CE mark	Safety class I (I)	PC	Yes	No	ENEC mark	F	850/30	LED22S	No
910500453337	CE mark	Safety class I (I)	PC	Yes	No	ENEC mark	F	850/30	LED34S	No
910500453338	CE mark	Safety class I (I)	PC	Yes	No	ENEC mark	F	850/30	LED40S	No
910500453339	CE mark	Safety class I (I)	PC	Yes	No	ENEC mark	F	850/30	LED60S	No
910500454306	CE mark	Safety class I (I)	PC	Yes	EL3	ENEC mark	F	850/30	LED60S	No

General Information (2/2)

order code	Number of light sources	Product Family Code	UL mark
910500453335	1	WT120C	No
910500453336	1	WT120C	No
910500453337	1	WT120C	No
910500453338	1	WT120C	No

order code	Number of light sources	Product Family Code	UL mark
910500453339	1	WT120C	No
910500454306	1	WT120C	No

Initial Performance (IEC Compliant)

order code	Initial chromaticity	Init. Corr. Color Temperature	Init. Color Rendering Index	Initial LED luminaire efficacy	Initial luminous flux	Initial input power
910500453335	(0.38, 0.38) SDCM ~LT~3.5	4000 K	~GT~80	106	1800	17
910500453336	(0.38, 0.38) SDCM ~LT~3.5	4000 K	~GT~80	110	2200	20
910500453337	(0.38, 0.38) SDCM ~LT~3.5	4000 K	~GT~80	117	3400	29
910500453338	(0.38, 0.38) SDCM ~LT~3.5	4000 K	~GT~80	105	4000	38
910500453339	(0.38, 0.38) SDCM ~LT~3.5	4000 K	~GT~80	105	6000	57
910500454306	(0.38, 0.38) SDCM ~LT~3.5	4000 K	~GT~80	105	6000	57

Operating and Electrical

order code	Input Voltage
910500453335	220 to 240
910500453336	220 to 240
910500453337	220 to 240
910500453338	220 to 240

order code	Input Voltage
910500453339	220 to 240
910500454306	220 to 240

Mechanical and Housing

order code	Color
910500453335	Grey
910500453336	Grey
910500453337	Grey
910500453338	Grey
910500453339	Grey
910500454306	Grey

Approval and Application

order code	Mech. impact protection code	Ingress protection code
910500453335	IK08	IP65
910500453336	IK08	IP65
910500453337	IK08	IP65
910500453338	IK08	IP65
910500453339	IK08	IP65
910500454306	IK08	IP65



© 2016 Philips Lighting Holding B.V.
All rights reserved.

Specifications are subject to change without notice. Trademarks are the property of Koninklijke Philips N.V. (Royal Philips) or their respective owners.

www.philips.com/lighting

2016, May 15
data subject to change